

**McGraw-Hill Science © 2000, Texas Edition  
TAKS Practice Test**

**Grade 5, Chapter 13**

**Blood and Air**

**Name** \_\_\_\_\_

**Date** \_\_\_\_\_

- 1** What is the shortest and thinnest blood vessel?
- A** Artery
  - B** Capillary
  - C** Vein
  - D** Alveoli
- 2** The role of hemoglobin in blood is to \_\_\_\_\_.
- F** carry oxygen
  - G** stop cuts from bleeding
  - H** make white blood cells
  - J** kill bacteria and other harmful things in blood
- 3** What do platelets do?
- A** Platelets carry gases between the lungs and body cells.
  - B** Platelets make red blood cells and plasma.
  - C** Platelets help the blood to clot.
  - D** Platelets help the body fight germs.
- 4** People who have sickle cell anemia have misshapen red blood cells. What causes this disease?
- F** Bacteria cause sickle cell anemia.
  - G** Tobacco and alcohol cause sickle cell anemia.
  - H** Lack of exercise causes sickle cell anemia.
  - J** Sickle cell anemia is inherited. Parents may pass the trait for sickle cells to their children.

Use the chart to answer Questions 5 and 6

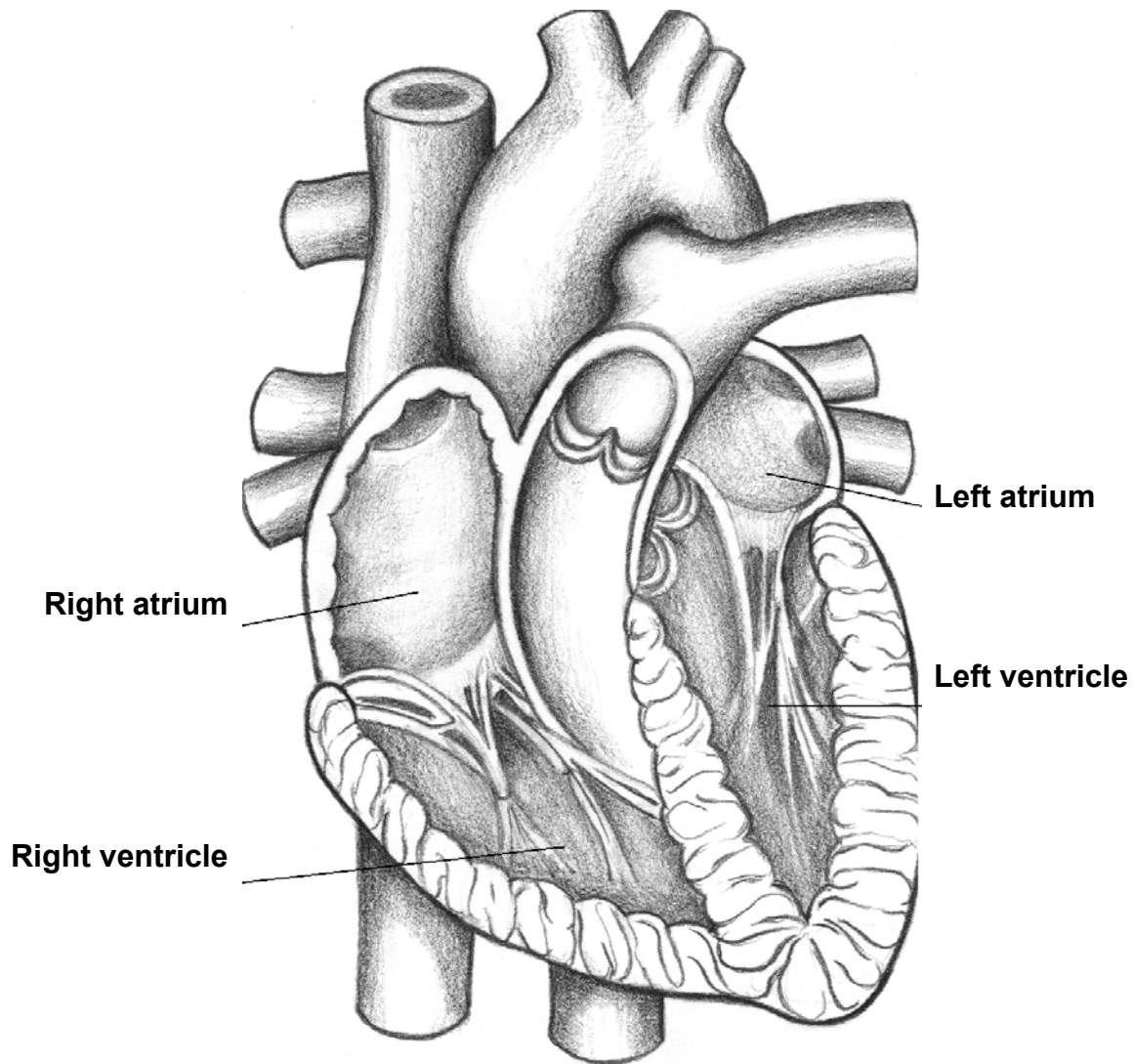
### Blood Transfusions

Recipient	Donor			
	Type A	Type B	Type AB	Type O
Type A	YES	NO	NO	YES
Type B	NO	YES	NO	YES
Type AB	YES	YES	YES	YES
Type O	NO	NO	NO	YES

- 5 Which blood type is called “the universal donor”?
- A Type A
  - B Type B
  - C Type AB
  - D Type O
- 6 A woman with Type AB blood needs a transfusion. What type of blood could she receive?
- F Type AB blood only
  - G Type A blood or Type B blood.
  - H Type O blood only
  - J Any type of blood

Use the illustration to answer Questions 7 and 8.

### The Heart



- 7 The blood that fills the right atrium and right ventricle has \_\_\_\_\_ than the blood that fills the left atrium and left ventricles.
- A more oxygen
  - B less oxygen
  - C more red blood cells
  - D fewer white blood cells and platelets

- 8** A valve separates the right atrium from the right ventricle. What does the valve do?
- F** The valve lets blood move only from the atrium to the ventricle.
  - G** The valve lets blood move only from the ventricle to the atrium.
  - H** The valve lets blood move in either direction between atrium and ventricle.
  - J** The valve lets red blood cells pass through, but not white blood cells
- 9** The \_\_\_\_\_ is a stiff, wide tube that carries air between the throat and lungs.
- A** aorta
  - B** trachea
  - C** alveoli
  - D** bronchiole
- 10** How does a muscle called the diaphragm affect breathing?
- F** The diaphragm opens and closes the opening of the esophagus, which leads to the stomach.
  - G** The diaphragm pulls on the trachea, making it larger or smaller.
  - H** The diaphragm removes oxygen from the air as the air rushes by it.
  - J** Air rushes in and out of the lungs as the diaphragm changes the size of the chest cavity.

- 11** People take in oxygen from the air as they breathe. Why does the air's oxygen supply not run out?
- A** Water adds oxygen to the air as it evaporates from the oceans.
  - B** Many animals, including birds and reptiles, add oxygen to the air as they breathe.
  - C** Plants add oxygen to the air as they perform photosynthesis.
  - D** Volcanoes add oxygen to the air when they erupt.
- 12** To keep your respiratory system healthy, the best advice to follow is: \_\_\_\_\_
- F** Drink beverages with lots of caffeine.
  - G** Exercise regularly and avoid smoking.
  - H** Stretch your lungs by holding your breath.
  - J** Eat lots of bread, cereal, and pasta.
- 13** Which treatment would most likely help someone suffering an asthma attack?
- A** Walking briskly in fresh air.
  - B** Inhaling a drug that relaxes muscles and opens airways.
  - C** Inhaling an antibiotic, a drug that kills bacteria.
  - D** Breathing air filled with dust and pollen.

ANSWER KEY and CORRELATIONS:

<b>Question</b>	<b>Answer</b>	<b>McGraw-Hill Science</b>
1	B	p. 580
2	F	p. 580
3	C	p. 580
4	J	p. 586
5	D	p. 581
6	J	p. 581
7	B	p. 583
8	F	p. 582
9	B	p. 593
10	J	p. 592
11	C	p. 594
12	G	p. 596
13	B	p. 596