

**McGraw-Hill Science © 2000, Texas Edition
TAKS Practice Test**

**Grade 3, Chapter 1
The World of Living Things**

Name _____

Date _____

Use the illustrations and your knowledge of science to answer Questions 1 and 2.



Mouse



Beetle



House plant

- 1 The mouse, beetle, and house plant are each an example of _____.
- an organism
 - an animal
 - a hibernator
 - metamorphosis
- 2 Which respond to changes in the environment?
- Mouse only
 - Mouse and beetle only
 - Beetle and house plant only
 - Mouse, beetle, and house plant
- 3 An animal might help a plant reproduce when it eats the plant's _____.
- eggs
 - leaves
 - roots
 - fruit

Use the information below and your knowledge of science to answer Questions 4 and 5.



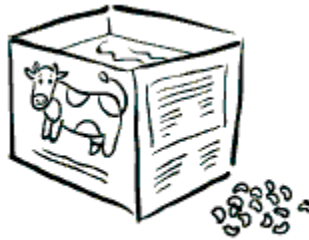
Carton A (empty)



Carton B (dry soil)



Carton C (wet soil)

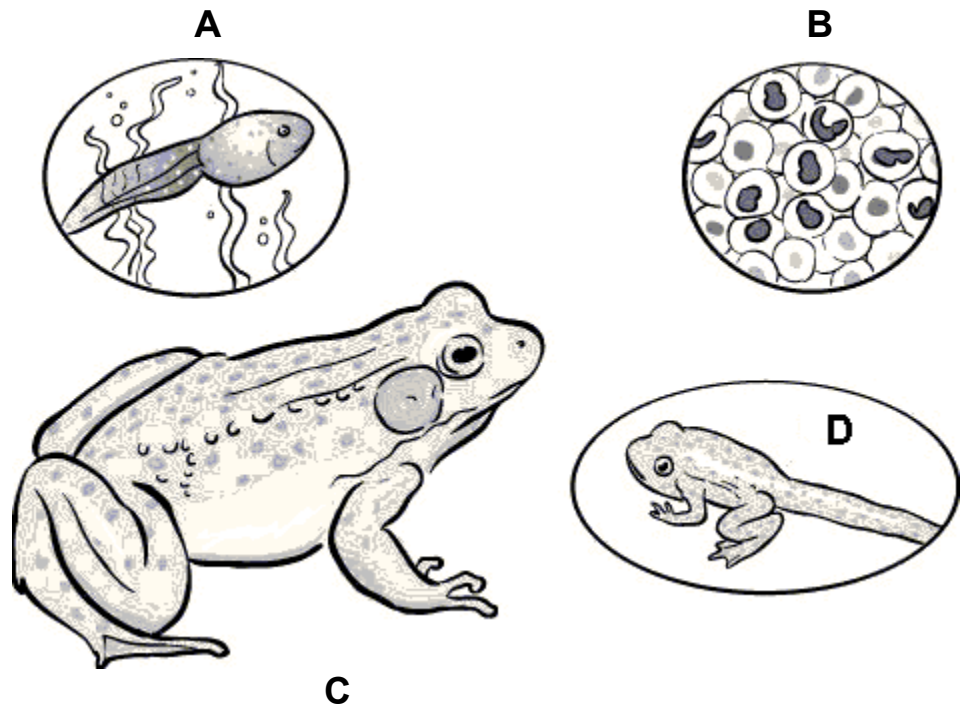


Carton D (water)

- 4 What question does this experiment help to answer?
- How tall can a pea plant grow?
 - How tall can a pea plant grow in one month?
 - Do pea seeds need soil and water to grow?
 - Can pea seeds grow in different kinds of soils?
- 5 By watching a pea seed grow into a plant, the student is observing how a pea seed _____.
- reproduces
 - develops
 - communicates
 - undergoes metamorphosis

Use the illustrations and your knowledge of science to answer Questions 6 to 8.

Stages in a Frog's Life Cycle



6 What is the correct order of the four stages of the frog's life cycle?

- B -> A -> D -> C
- D -> A -> B -> C
- B -> D -> A -> C
- A -> B -> D -> C

8 When a tadpole changes into an adult frog, it gains the ability to _____.

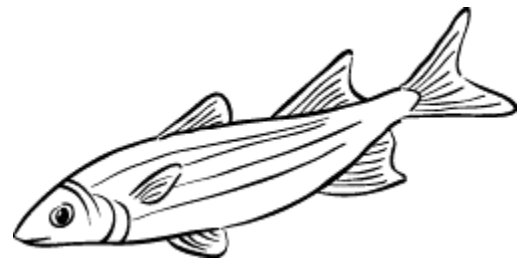
- respond to its environment
- take in oxygen through gills
- swim in water
- breathe air through lungs

7 What is the name for the life cycle changes that a frog goes through?

- Pupa development
- Metamorphosis
- Germination
- Reproduction

9 How does a fish use gills?

- Gills take in water.
- Gills take in oxygen from the water.
- Gills pump blood through the fish's body.
- Fish eliminate waste through gills.



10 Every fall, Canada geese fly south from Canada and the northern United States. They return in the spring. Moving back and forth between places to live is called _____.

- migration
- hibernation
- metamorphosis
- conservation

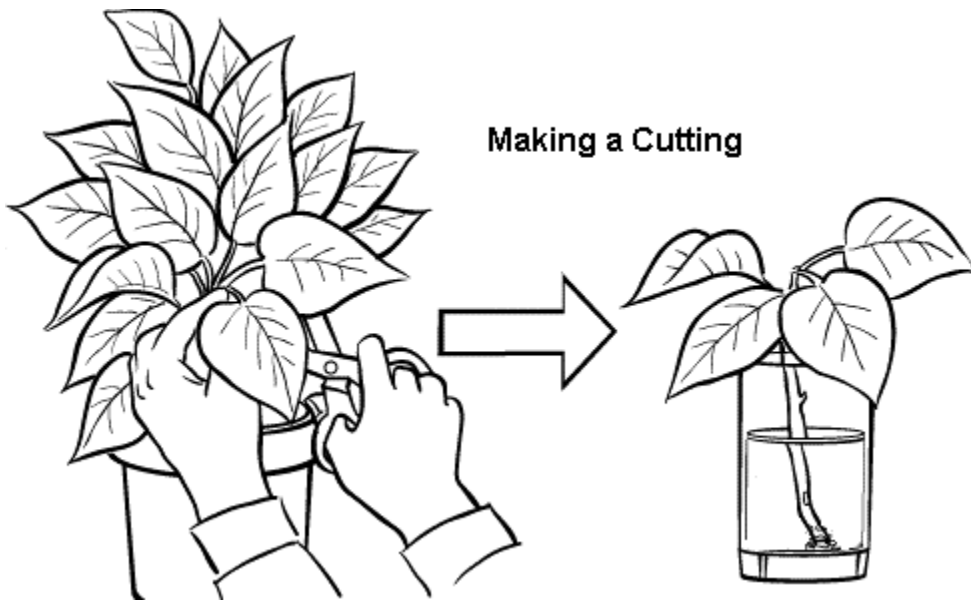
11 Which of these animals grow from an egg inside the female's body?

- Bird
- Turtle
- Bear
- Monarch butterfly

12 The number of frogs in the United States has been going down for many years. Which of these actions would most likely raise the number of frogs?

- Fill in ponds and marshes.
- Make new ponds and marshes.
- Hunt more of the fish and birds that eat frog eggs.
- Use more chemicals that kill insects.

Use the information below and your knowledge of science to answer Questions 13 and 14.



- 13 Over time, the cutting will change in which of these ways?
- Roots will grow from the stem.
 - Roots will grow from the leaves.
 - A tuber will form.
 - A bulb will form.
- 14 Making a cutting is one way to help a plant _____.
- respond to the environment
 - take in energy
 - reproduce
 - make flowers and fruit

ANSWER KEY and CORRELATIONS:

Question	Answer	TAKS	McGraw-Hill Science Grade 3 textbook
1	an organism	2.9A, 2.9B	p. 4
2	Mouse, beetle, and house plant	2.9A, 2.9B	p. 6
3	fruit	2.9B, 5.6C	p. 35
4	Do pea seeds need soil and water to grow?	5.2A	p. 13
5	develops	5.11A	p. 4
6	B -> A -> D -> C	4.6A, 5.6C	p. 25
7	Metamorphosis	4.6A	p. 25
8	breathe air through lungs	4.6A, 5.6C	p. 25
9	Gills take in oxygen from the water.	5.9A	p. 16
10	migration	4.6A	p. 18
11	Bear	5.6C	pp. 24-27
12	Make new ponds and marshes.	3.8C	p. 30
13	Roots will grow from the stem.	5.6C, 2.9A, 5.9A	p. 38
14	reproduce	5.9A, 5.6C	p. 38