

**McGraw-Hill Science © 2000, Texas Edition
TAKS Practice Test**

**Grade 2, Chapter 9
At Home in a Canyon**

Name _____

Date _____

Use the picture to answer Questions 1 and 2.



1 The eagle has caught a snake. The snake is the _____.

- predator
- prey
- hunter
- habitat

2 What do the eagle and the snake share?

- The same food
- The same enemies
- The same body parts
- The same habitat

Use the picture and words to answer Questions 3 and 4.

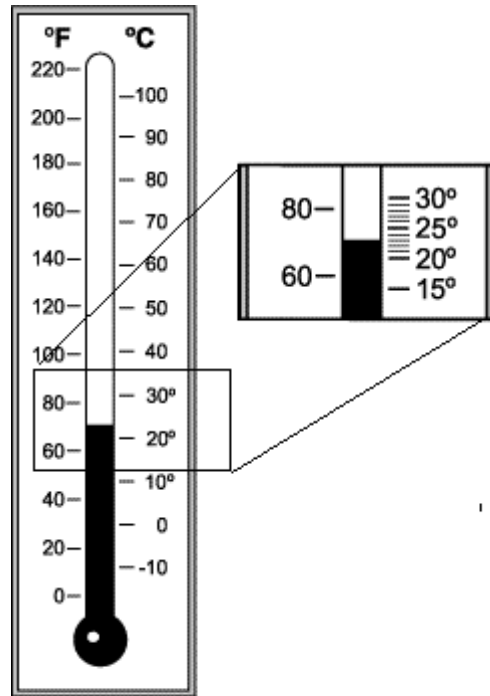
3 What does the thermometer show?

- The temperature is 25°C.
- The temperature is 23°C.
- The length of a line is 25°C.
- The length of a line is 23°C.

4 You use a thermometer to find out how _____ something is.

- bright or dark
- high or low
- warm or cool
- long or short

Thermometer



5 What do living things need from their habitats?

- Food only
- Water only
- Shelter only
- Food, water, air, and shelter

6 What do all animals have in common?

- All animals live about 70 years.
- All animals hatch from eggs.
- All animals eat other animals for food.
- All animals grow up to look like their parents.

Use the pictures to answer Questions 7 and 8.

The Feet of Four Animals



A



B



C



D

7 Which animal uses its feet to catch prey?

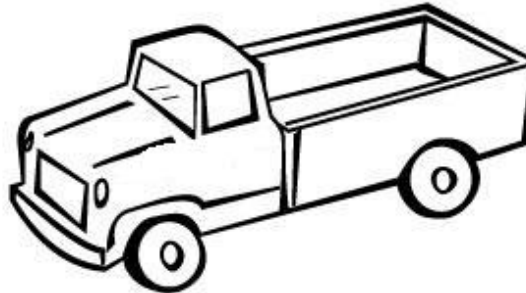
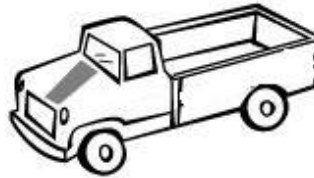
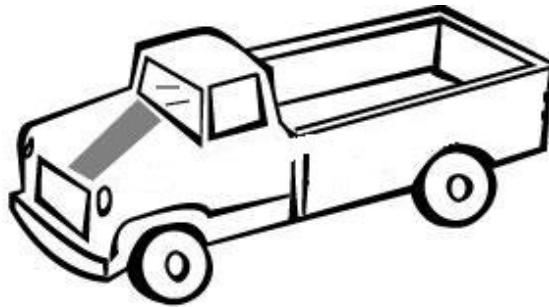
- A
- B
- C
- D

8 Which animal runs and climbs on rocky slopes?

- A
- B
- C
- D

Use the pictures to answer Questions 9 and 10.

Six toys



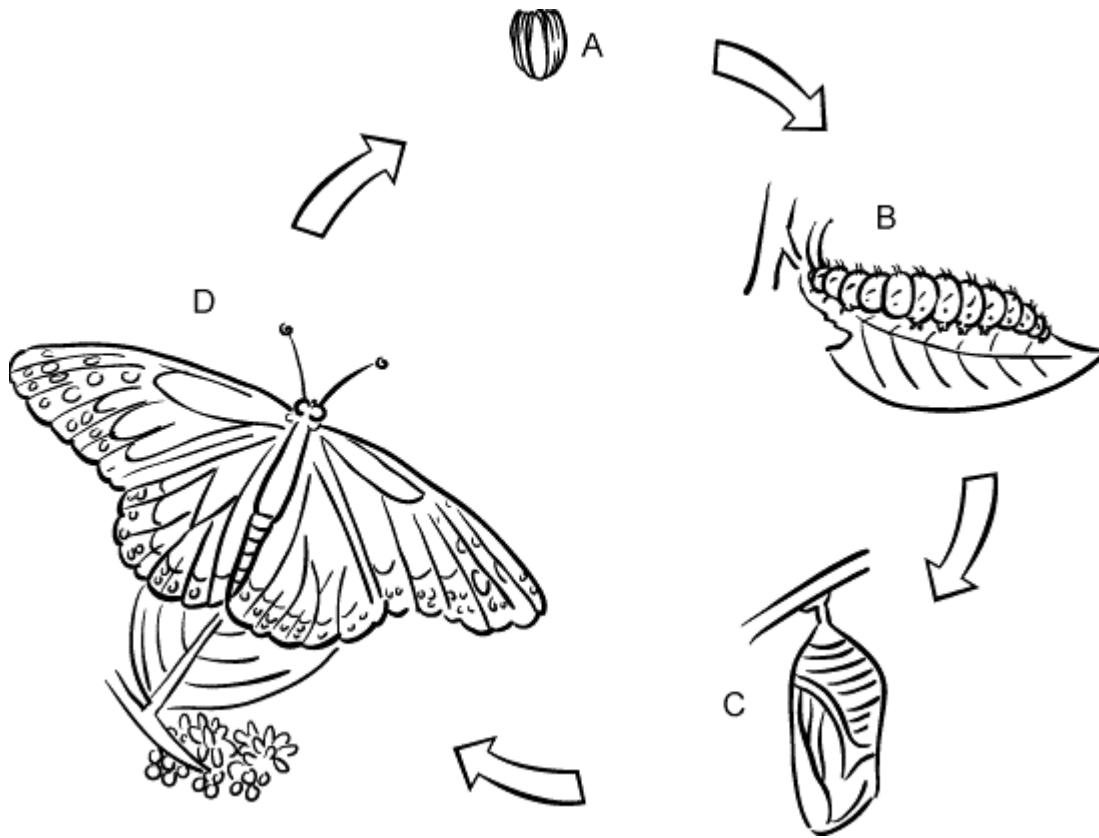
9 Which group has exactly four toys?

- Small toys
- Big toys
- Toys with wheels
- Toys with a stripe

10 When you group toys that are alike in some way, you are _____ the toys.

- picturing
- classifying
- debating
- adapting

Use the pictures and words to answer Questions 11 and 12.



11 Which stage is the pupa?

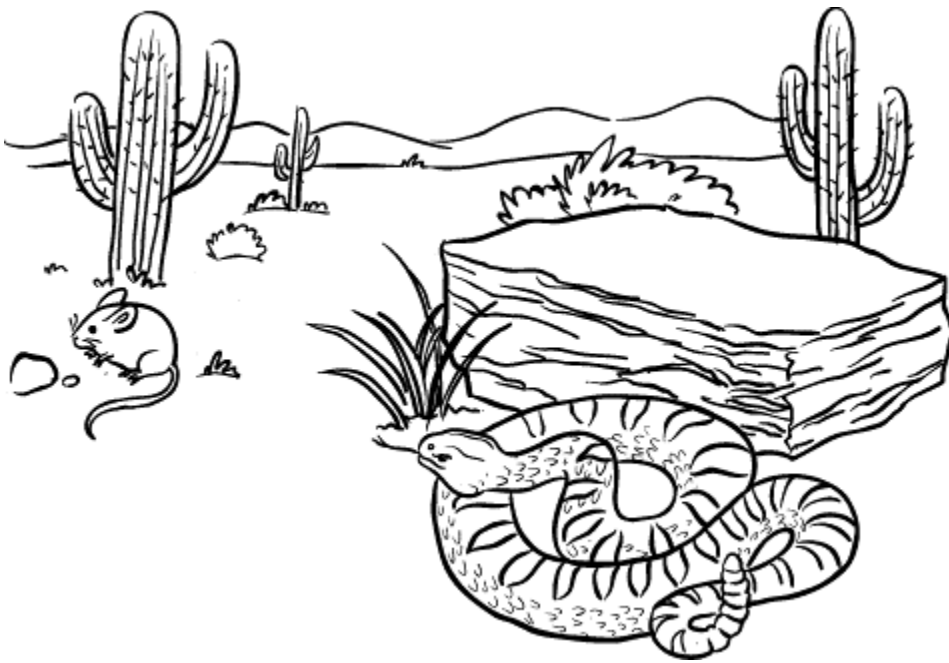
- A
- B
- C
- D

12 Where do butterfly eggs come from?

- Any adult insect
- A caterpillar
- A pupa
- An adult butterfly

13 What kind of animal is shown here?

- Predator
- Prey
- Poisonous
- An animal that eats plants



14 Without snakes, what would happen to the number of mice?

- The number of mice would go up.
- The number of mice would go down.
- The number of mice would stay the same.
- Mice would become extinct.

ANSWER KEY and CORRELATIONS:

Question	Answer	TAKS	McGraw-Hill Science Grade 2 textbook
1	prey	2.9B, 5.5B	p. 206
2	The same habitat	3.8A	p. 200
3	The temperature is 23°C.	5.4A	pp. 195, R12
4	warm or cool	5.4A	pp. 195, R12
5	Food, water, air, and shelter	3.8A, 2.9B	p. 200
6	All animals grow up to look like their parents.	5.10A, 5.6C	p. 211
7	A	2.9A	p. 205
8	D	2.9A	p. 204
9	Toys with a stripe	5.7A	p. 198
10	classifying	5.7A	p. 198
11	C	5.6C	p. 212
12	An adult butterfly	5.6C, 3.3C	p. 212
13	Predator	2.9A	p. 204
14	The number of mice would go up.	2.9B, 5.5B	p. 207