

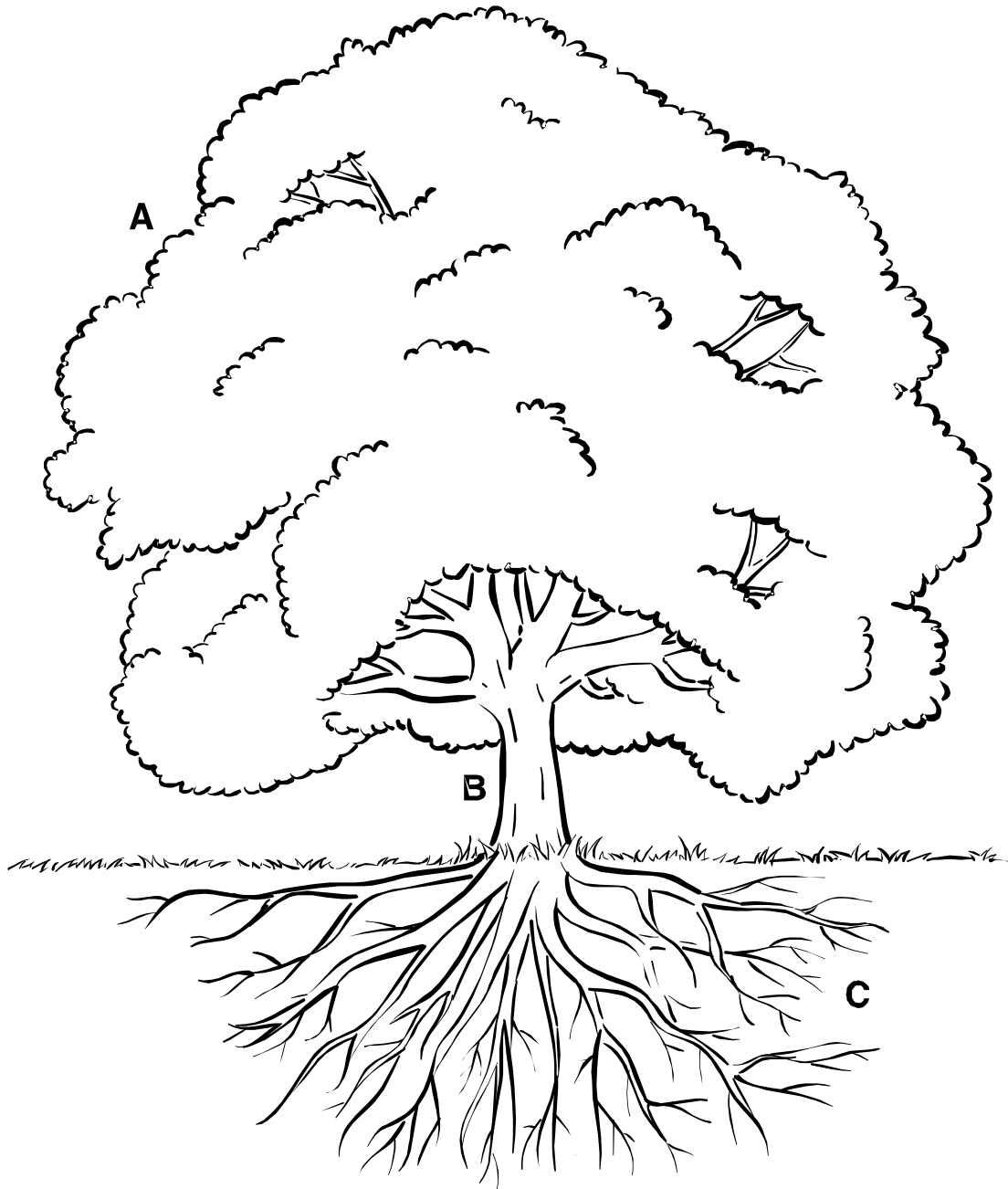
**McGraw-Hill Science © 2000, Texas Edition  
TAKS Practice Test**

**Grade 1, Chapter 1  
What Is a Tree?**

**Name** \_\_\_\_\_

**Date** \_\_\_\_\_

Use the picture to answer Questions 1, 2, and 3.



1 What is the job of Part A?

- Making food
- Taking in water
- Making seeds

2 What is one job of Part C?

- Making food
- Taking in water
- Making seeds

3 Which part is the stem of the tree?

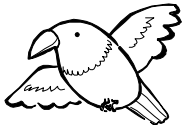
- Part A
- Part B
- Part C

4 To \_\_\_\_\_ means to learn by looking, touching, tasting, seeing, or hearing.

- ignore
- grow
- observe



Tree



Bird



Dandelion



Cat



Mushroom



Girl

5 What do the pictures shown here have in common?

- All are plants.
- All are animals.
- All are living things.

Use the picture to answer Questions 6 and 7.



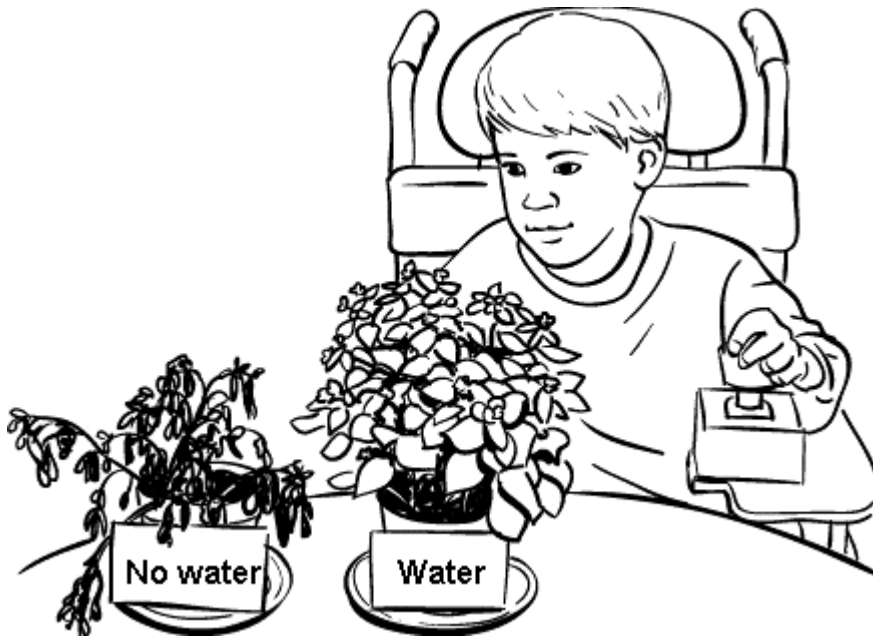
6 What tool is the boy using?

- Hand lens
- Calculator
- Ruler

7 What safety rule should the boy follow?

- Do not touch the plant.
- Do not taste the plant.
- Do not look at the plant.

Use the picture to answer Questions 8 and 9.



The boy waters one plant.  
He does not water the other plant.  
He observes both plants for many weeks.

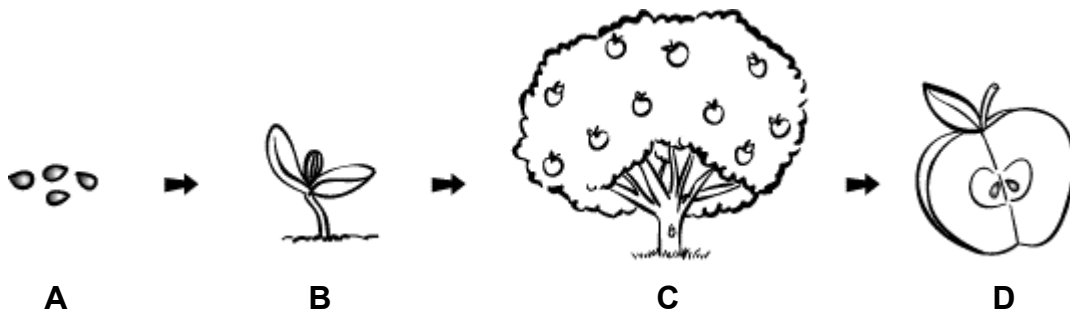
8 What does the boy show with the two plants?

- Plants need water to live.
- Plants need air to live.
- Plants only grow in pots.

9 Do all plants need sunlight to grow?

- Yes. All plants need sunlight.
- No. Only some plants need sunlight.
- No. All plants can live without sunlight.

Use the pictures to answer Questions 10 and 11.



10 Which picture shows a seedling?

- Picture A
- Picture B
- Picture C

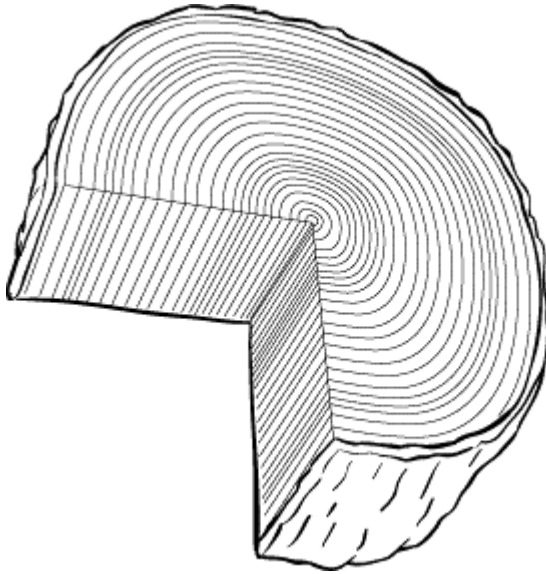
11 What do the pictures tell about apple trees?

- How they make wood
- Why they need water and sunlight
- How they make more apple trees

Use the picture to answer Questions 12 and 13.



- 12** Is this tree alive?
- Yes. The tree will grow new leaves in spring.
  - No. The tree is not alive.
- 13** What happened to the tree in the season before the one shown here?
- Leaves began to grow. Flowers grew.
  - Fruit grew on the tree.
  - Leaves turned colors and fell off the tree.



**14** What can you learn by counting tree rings?

- The height of the tree when it died
- The age of the tree when it died
- The number of leaves on the tree

ANSWER KEY and CORRELATIONS:

Question	Answer	TAKS	McGraw-Hill Science Grade 1 textbook
1	Making food	2.9A	p. 4
2	Taking in water	2.9A	p. 5
3	Part B	2.9A	p. 8
4	observe	5.2B	p. 6
5	All are living things.	2.9A	p. 12
6	Hand lens	5.4A	p. 7
7	Do not taste the plant.	3.1A	pp. 7, R3
8	Plants need water to live.	2.9B	p. 11
9	Yes. All plants need sunlight.	2.9B	p. 13
10	Picture B	5.6C	p. 18
11	How they make more apple trees	5.6C	p. 18
12	Yes. The tree will grow new leaves in the spring.	4.6A, 5.6C	p. 25
13	Leaves turned colors and fell off the tree.	4.6A, 5.6C	p. 25
14	The age of the tree when it died	5.11	p. 28